



xming
小明科技

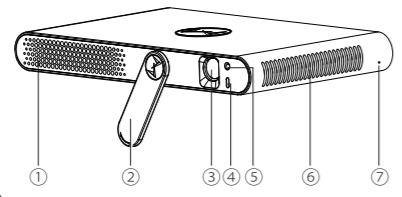
激光微型投影机快速操作指南



型号: A62S/A62C

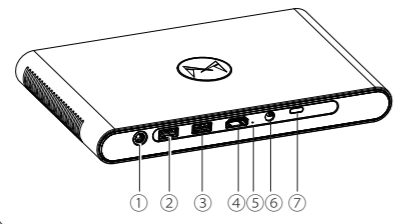
产品展示

正面



- ① 散热出风口
- ② 旋转开关
- ③ 镜头
- ④ 反光镜安装孔
- ⑤ 自动对焦摄像头
- ⑥ 散热入风口
- ⑦ 电源指示灯

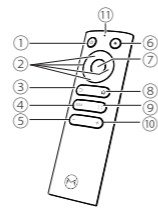
背面



- ① 19V 电源
- ② USB1
- ③ USB2
- ④ HDMI
- ⑤ 复位键 (本机无作用)
- ⑥ 耳机接口
- ⑦ TYPE C(A62C)

- 2 -

遥控器



序号	按键描述
①	电源键: 在开机任何场景下按电源键实现待机功能; 在待机情况下按此键可开机。
②	方向键: 上下左右移动光标。
③	返回键: 返回上一级菜单。
④	菜单/3D 键: 短按调出菜单, 长按调出 3D 控制台。
⑤	音量 - 键: 减小音量。
⑥	激光笔键: 长按激光笔点亮并发光, 松开熄灭。
⑦	确认键: 确认当前操作。
⑧	主页键: 调出主页。
⑨	对焦键: 调出对焦界面。
⑩	音量 + 键: 增加音量。
⑪	指示灯 (蓝色): 短按亮一下, 长按长亮。

注意:

- 本投影机配备 2 种遥控器 (RC71W-S/RC71W-G, S 表银色, G 表金色), 请以随机配备的遥控器实物为准。
- 投影机开机后, 同时按住音量 + 和音量 - 键, 指示灯蓝色闪烁。当指示灯停止闪烁并呈蓝色长亮时, 表示遥控器初始化配对成功。
- 遥控器使用 2 节 7 号电池。

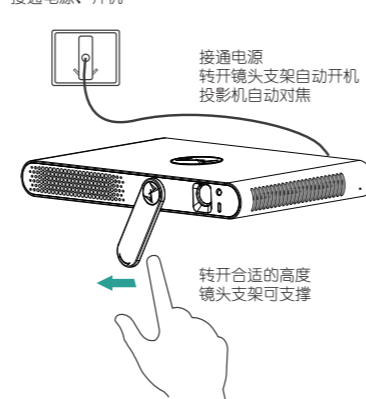
包装清单

微投影机 x1	遥控器 x1
电源适配器 x1	遥控器电池 x2
快速操作指南 x1	合格证 x1
保修卡 x1	

- 3 -

开机步骤

接通电源、开机



- 4 -

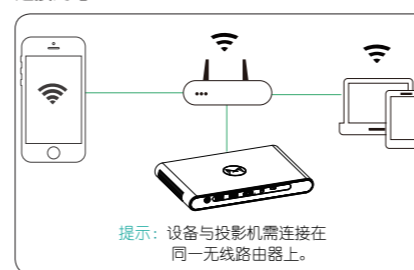
多屏互动

APP 下载



iOS Android
(扫描二维码) 安装小明助手
注意: Windows 系统下载客户端请参考投影机“多屏互动”界面操作指引。

连接网络



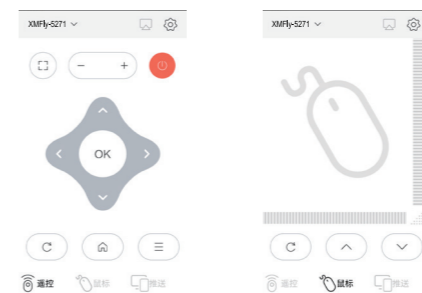
- 5 -

连接设备



在投影机界面的“多屏互动”中, 查看设备编号
手机端选择对应的设备编号并连接。

本机互动

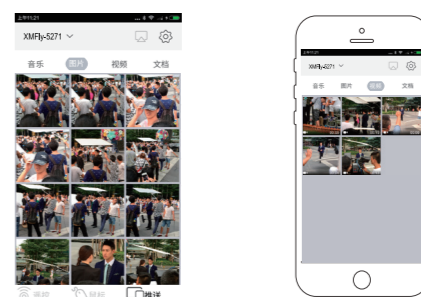


手机端遥控器控制界面
可实现对投影的控制。

手机端鼠标控制界面框
内滑条功能可实现页面
上下左右移动。

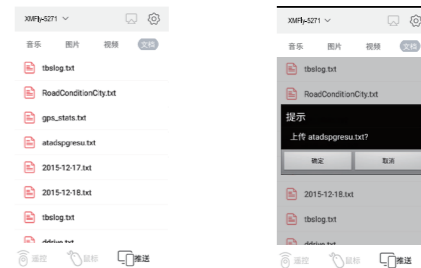
- 6 -

多媒体推送



可以将手机上的多媒体资源一键推送到小明激光投影
产品显示和播放, 享受超大屏的视听盛宴。

办公文档推送



可以将手机上的文档资源 (ppt, doc, pdf 等) 一键推送到
小明激光产品显示, 实现快捷超大屏商务展示。

- 7 -



xming
小明科技



官方微信



官方微博

深圳市光峰小明科技有限公司
地址: 深圳市南山区高新区高新中一道 9 号软件大厦 10 楼
小明官网: www.ixming.com
售后热线: 400-1866-150
执行企业标准: Q/GF 001-2016

P/N: D0700000029
版本: Rev3.0



xming
小明科技

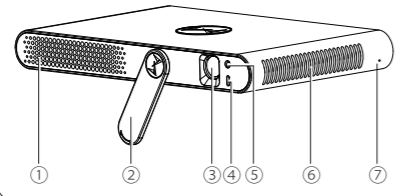
Laser Micro Projector Quick Start Guide



Model:A62S/A62C

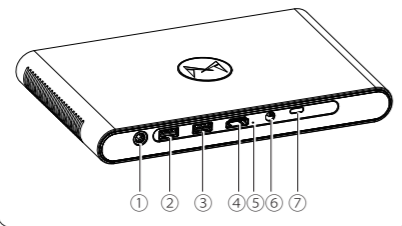
Projector appearance

Front



- ① Exhaust vent
- ② Rotary switch
- ③ Lens
- ④ Reflector mount hole
- ⑤ Autofocus camera
- ⑥ Air intake vent
- ⑦ Power indicator

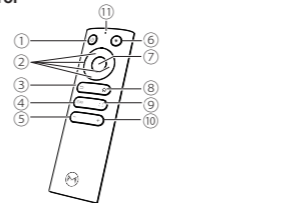
Back



- ① 19V Power
- ② USB1
- ③ USB2
- ④ HDMI
- ⑤ Reset key (Disable for this model)
- ⑥ Headphone port
- ⑦ TYPE C (A62C)

- 2 -

Remote Control



No.	Description
①	Power: Turn the projector on or off.
②	Arrow buttons: move and select the desired menu items and to make adjustment.
③	RETURN: Return to the previous menu.
④	MENU/3D: Pop up menu with short press, and pop up 3D control panel with long press.
⑤	VOLUME -: Volume down.
⑥	Laser pen: Lighting when press, and turning off when move away.
⑦	ENTER: Verify current action.
⑧	HOME: Open the home page.
⑨	FOCUS: Open the focus interface.
⑩	VOLUME +: Volume up.
⑪	Indicator(blue): Splash with short press, and light with long press.

Note:

- There are 2 colors of remote controls (RC71W-S/RC71W-G, S is silver, G is golden). The remote control packaged with current projector shall prevail.
- Hold VOLUME + and VOLUME - at the same time after turn on the projector, indicator flashes blue. When the indicator stops flashing and lights blue, the remote control and the projector are matched successfully.
- Two AAA batteries are used in the remote control.

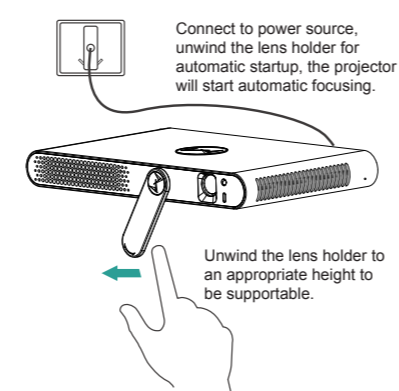
Packing List

Micro Laser Projector x1	Remote control x1
Power adapter x1	Remote control batteries x2
Quick Start Guide x1	Certificate of quality x1

- 3 -

Turn on the projector

Connect to power source and turn on the projector



Connect to power source, unwind the lens holder for automatic startup, the projector will start automatic focusing.

Unwind the lens holder to an appropriate height to be supportable.

- 4 -

Multi-screen interaction

APP download

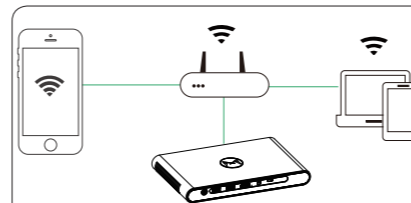


iOS

Android

(Scan QR code) Install **Xming assistant**
Note: Download the client on a Windows system. Please refer to the projector's "Multi-screen interaction" operating guidelines.

Network connection



Tip: The device and the projector need to be connected to the same wireless router.

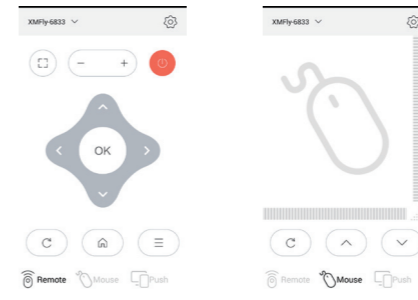
- 5 -

Device connection



Click "Multi-screen interaction" on the projector to check the device number, and select the corresponding device number on the mobile phone to connect.

Interaction with the projector

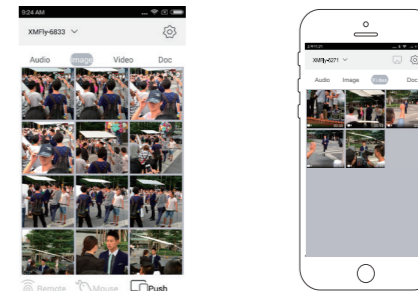


Control of the projector can be implemented by the remote control on the mobile phone through the interface.

The slider function in the green box on the mobile phone mouse control interface can be used to control up, down, left and right page movement.

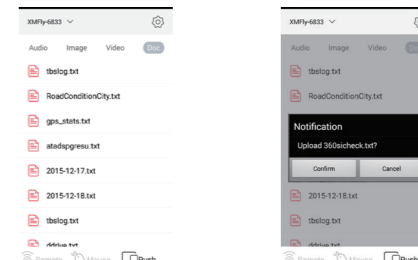
- 6 -

Multimedia push



Press just one key, the multimedia resources on your mobile phone can be pushed onto the Xming laser projector for display and playback, giving a visual feast on an ultra-large screen.

Office document push



Press just one key, document resources (ppt, doc, pdf...) on your mobile phone can be pushed to the Xming laser projector for display, achieving a quick and ultra-large screen business presentation.

- 7 -



xming
小明科技



Official Wechat



Official Weibo

Shenzhen Apptronics Xming Technology Co., Ltd.
Address: F10, Software Building, No. 9, Gaixin Zhongyidao, Hi-tech Zone, Nanshan District, Shenzhen
Official Website: www.xming.com
Service Hotline: 400-1866-150
Enterprise Standards: Q/GF 001-2016

P/N: D0700000029
Version: Rev3.0